



Advanced Media Workflow Association

AMWA promotes the development and adoption of open, accessible standards and specifications relating to file-based workflows (including AAF, MXF and other formats), Service Oriented Architectures, and Application Specifications

The AMWA, is developing workflow solutions in several areas:

- Production
- Post Production
- Mastering**
- Preservation Archiving
- Program Distribution

Advanced Media Workflow Association
Putting AAF and MXF to Work

www.amwa.tv

The Problem...

- Interchange incompatibility** between disparate manufacturers/users
- Complexity of implementation** causes increases in both time to market and systems costs
- Metadata support** throughout the chain is vital. Historically metadata may have been lost and reentry required. Metadata is the key to automating the process
- Costs increase** when content owners have to create separate production chains for each output format

Advanced Media Workflow Association
Putting AAF and MXF to Work

www.amwa.tv

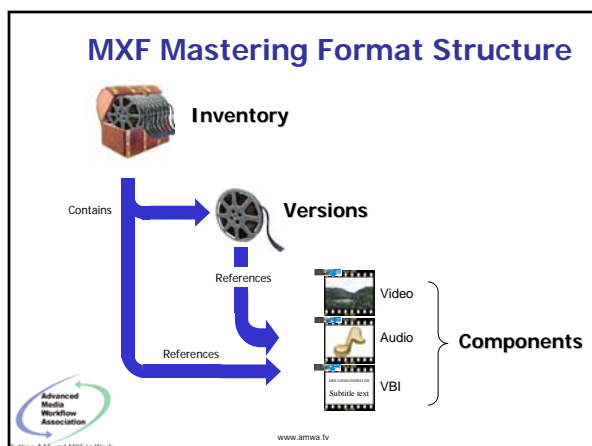
The MXF Mastering Format Project

Mastering in this context means the process of receiving a program, ingesting, repurposing and preparing file based versions for distribution

- Open - Vendor Independent Industry Initiative
- Set of file specifications leveraging existing standards
- A proposed MXF API
- A proposed **controlled subset of MXF options** for a specific user application space

Advanced Media Workflow Association
Putting AAF and MXF to Work

www.amwa.tv



What MXF options need to be controlled ?

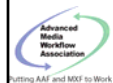
Advanced Media Workflow Association
Putting AAF and MXF to Work

www.amwa.tv

The Concept

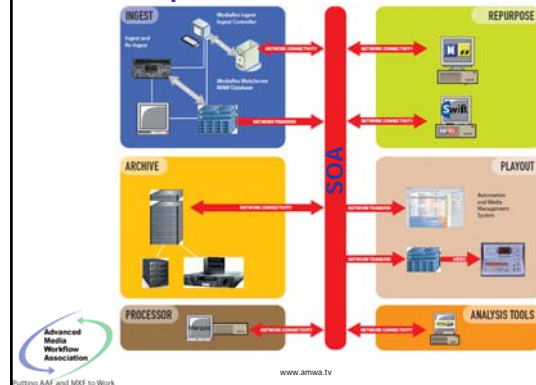
Vendor Independent solution:

- multi-vendor interchange
- Facilitates the creation of different versions from one program master (family viewing, adult viewing, additional language versions)
- Enables the efficient repurposing of content to many different platforms (SD, HD, Mobile phone, Web, IPTV, Broadband, DVD, etc.)

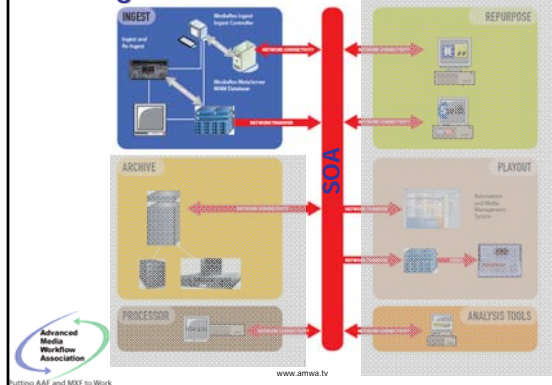


www.amwa.tv

Concept Overview

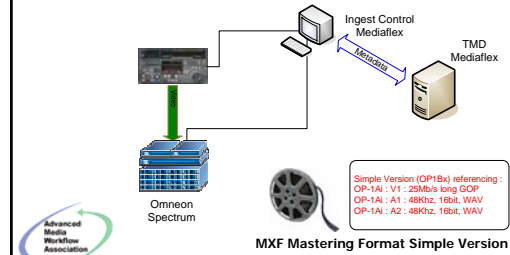


Ingest

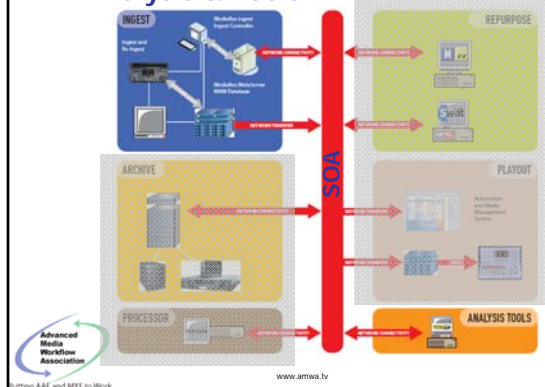


Ingest

- Ingest of a tape triggers the initial MXF Master file creation and inserts metadata



Analysis & Tools

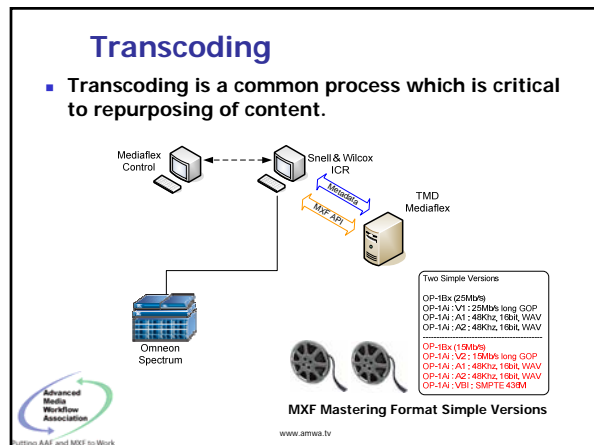
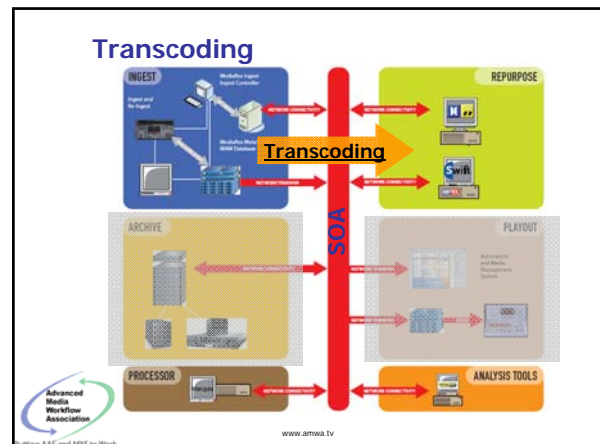
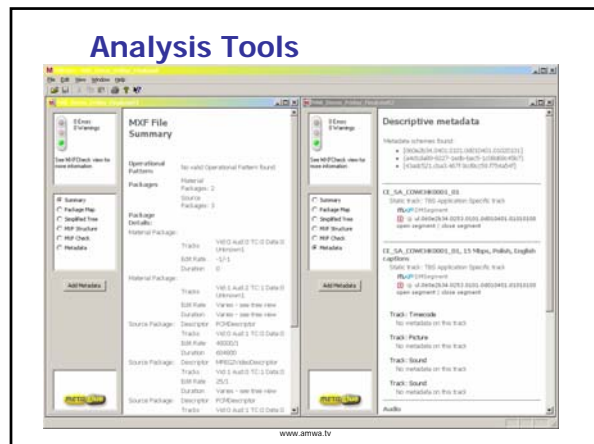


Analysis Tools

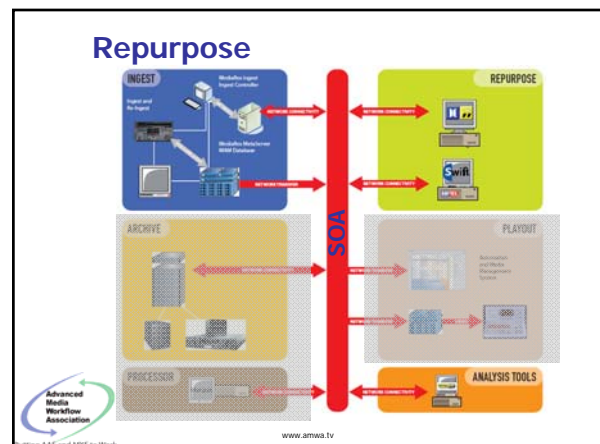
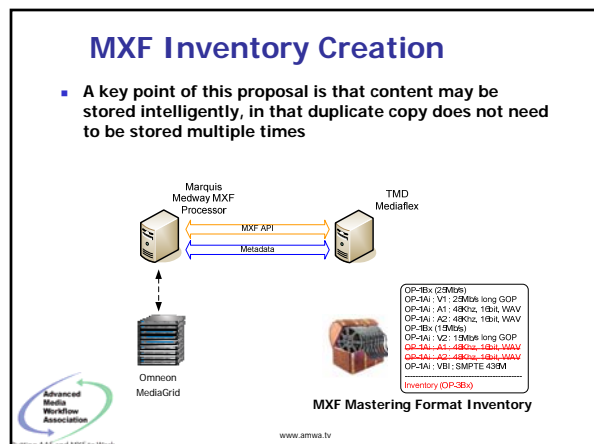
- These are good things – we need them badly
- Currently test tools from different vendors yield inconsistent results using same file
- MXF Mastering Format proposal eliminates ambiguity, allowing for uniform testing of files and metadata
- A challenge to the industry is to simplify test tools and to provide testing on a continuous basis throughout the process



www.amwa.tv



- ## MXF Processing Functions
- Create a Version
 - Create an Inventory
 - Append components to a Version/Inventory
 - Move or Copy a Version/Inventory
 - Delete a Version/Inventory
 - Delete a component from within a Version/Inventory
 - Extract one or more components from a Version/Inventory
 - Interrogate a Version/Inventory
 - Manage the activities
- www.amwa.tv



- Different opening and closing credits
- Pre/post watershed versions
- Web/mobile versions
- Different language tracks and subtitling
- And on and on.....

The diagram illustrates the structure of an audio track and a VBI track. The audio track is represented by a red bar (Audio track) and a blue bar (Metadata track). The VBI track is represented by a green bar (VBI track) and a blue bar (Metadata track). Both tracks are associated with RFC 4646 (ISO 639 ++).

Audio track:

- Annotation Language: en-US
- Spoken Language: en-GB
- Full Spoken language: en-GB-x-DolbyE-a-PostWatershed
- Description: Dolby E surround track with profanity

VBI track:

- Annotation Language: en-US
- Spoken Language: gr-Grek
- Full Annotation: gr-Grek
- Description: Greek subtitling for use in Greece

The diagram illustrates the Advanced Media Workflow Association (AMWA) XMF workflow, centered around a vertical red bar labeled "XMF". The workflow is divided into six main stages, each represented by a colored box with specific components and data flow arrows:

- INGEST (Blue Box):**
 - Components: Ingest and the Ingest, Multimedia Ingest System Controller, Multimedia Workflow MAM Database.
 - Arrows: "Network Connected" (to PREPARE), "Network Transfer" (to ARCHIVE).
- PREPARE (Yellow Box):**
 - Components: Network Connected, Software, Media.
 - Arrows: "Network Connected" (from INGEST), "Network Transfer" (to PLAYOUT).
- PLAYOUT (Orange Box):**
 - Components: Automation and Video Management System, Media.
 - Arrows: "Network Transfer" (from PREPARE), "Network Transfer" (to ANALYSIS TOOLS).
- ANALYSIS TOOLS (Orange Box):**
 - Components: Media, Analysis Tools.
 - Arrows: "Network Transfer" (from PLAYOUT), "Network Transfer" (to PROCESSOR).
- PROCESSOR (Brown Box):**
 - Components: Media, Processor.
 - Arrows: "Network Transfer" (from ANALYSIS TOOLS), "Network Transfer" (to ARCHIVE).
- ARCHIVE (Yellow Box):**
 - Components: Media, Archive.
 - Arrows: "Network Transfer" (from PROCESSOR), "Network Transfer" (back to INGEST).

At the bottom left, the AMWA logo is displayed with the text "Advanced Media Workflow Association" and "Putting AAF and XMF to Work". At the bottom center, the website "www.amwa.tv" is listed.

- A playout system can work with an asset manager to extract a specific version required for air
 - Playout server can extract instructions from the MXF Inventory file which say how the French version should be played
 - These instructions are used create the version that plays to air

The diagram illustrates the AMWA SOA architecture, centered around a vertical red bar labeled "SOA". Five functional blocks are connected to this central bar:

- INGEST** (Top Left, Blue): Includes "Ingest and Re-encode", "Media Server Input Controller", "Media Workflow M2M Database", and "Media Workflow M2M Controller".
- REPURPOSE** (Top Right, Green): Includes "Media Workflow M2M Controller", "Media Workflow M2M Database", "Media Workflow M2M Input Controller", and "Media Workflow M2M Output Controller".
- ARCHIVE** (Middle Left, Yellow): Includes "Media Workflow M2M Controller", "Media Workflow M2M Database", "Media Workflow M2M Input Controller", and "Media Workflow M2M Output Controller".
- PLAYOUT** (Middle Right, Orange): Includes "Media Workflow M2M Controller", "Media Workflow M2M Database", "Media Workflow M2M Input Controller", and "Media Workflow M2M Output Controller".
- PROCESSOR** (Bottom Left, Grey): Includes "Media Workflow M2M Controller", "Media Workflow M2M Database", "Media Workflow M2M Input Controller", and "Media Workflow M2M Output Controller".
- ANALYSIS TOOLS** (Bottom Right, Red): Includes "Media Workflow M2M Controller", "Media Workflow M2M Database", "Media Workflow M2M Input Controller", and "Media Workflow M2M Output Controller".

Arrows indicate the flow of data and control between these components and the central SOA bar. The AMWA logo is located in the bottom left corner.

The diagram illustrates two methods for archiving data, separated by a horizontal line. Both methods follow a similar flow: Archive → Central Storage → Add components → Playout Server → Distribution.

Interleaved files:

- Archive:** A thick curved arrow points from Central Storage back to Archive, labeled "Rewrite tape to archive new version".
- Central Storage:** A thick curved arrow points from Central Storage back to Add components, labeled "Copy back entire file".

component files:

- Archive:** A thin curved arrow points from Central Storage back to Archive, labeled "Append only new component files to archive version".
- Central Storage:** A thin curved arrow points from Central Storage back to Add components, labeled "Copy only the new component files".

The Big Picture...

- We had a need to reduce the cost of producing multiple versions of content
- We were successful in meeting this need using a well specified subset of MXF
- It works!!
- But...
 - This is still a work in process. This is an open initiative; we want your participation and input
- And...

Please get involved



www.amwa.tv

Next Steps

- The MXF Mastering Format is a project in process with the Advanced Media Workflow Association (documents available to members on the Web site www.amwa.tv)
- We are soliciting comments on this specification. The proposal will be revised based upon comments received



www.amwa.tv

Demonstration Partners



Thank You!

www.amwa.tv